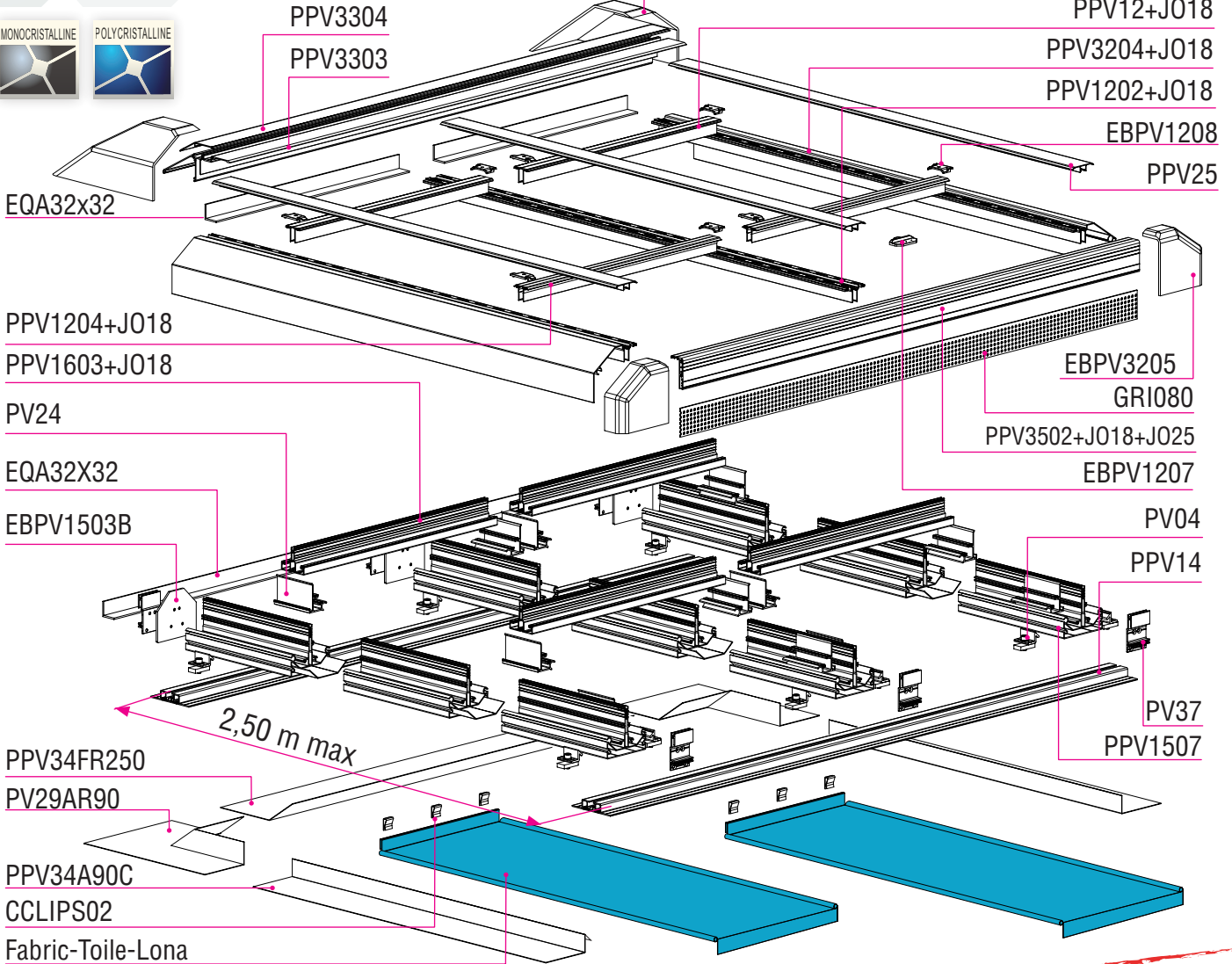


INTEGRATED SYSTEM 115M

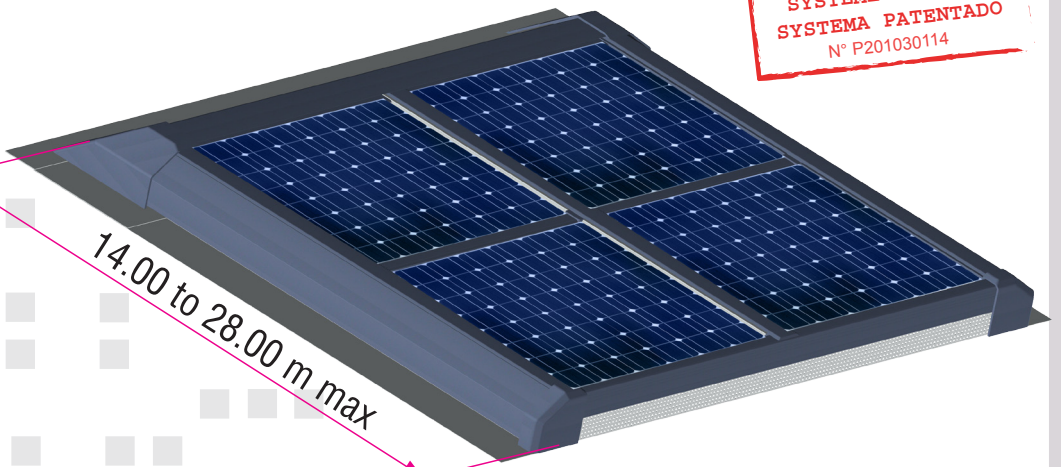
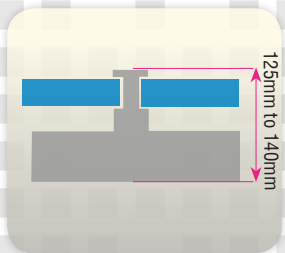
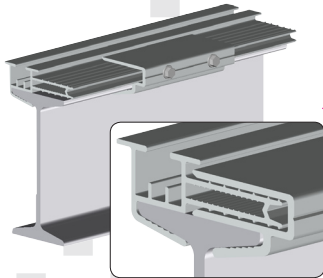
COMPLETE (35 à 50 C)

INDUSTRIAL OR AGRICULTURAL WITH VERTICAL VENTILATION

115M (35 to 50 C) - Integrated mounting system for industrial or agricultural buildings with vertical ventilation
 Système intégré complet 115 (35à50C) industriel ou agricole à ventilation verticale
 Sistema 115M integrado tejado industrial o agrícola con ventilación vertical
 Dachintegrierte Unterkonstruktion 115M für industrielle oder landwirtschaftliche Bedachungsanlage mit vertikaler Lüftung.

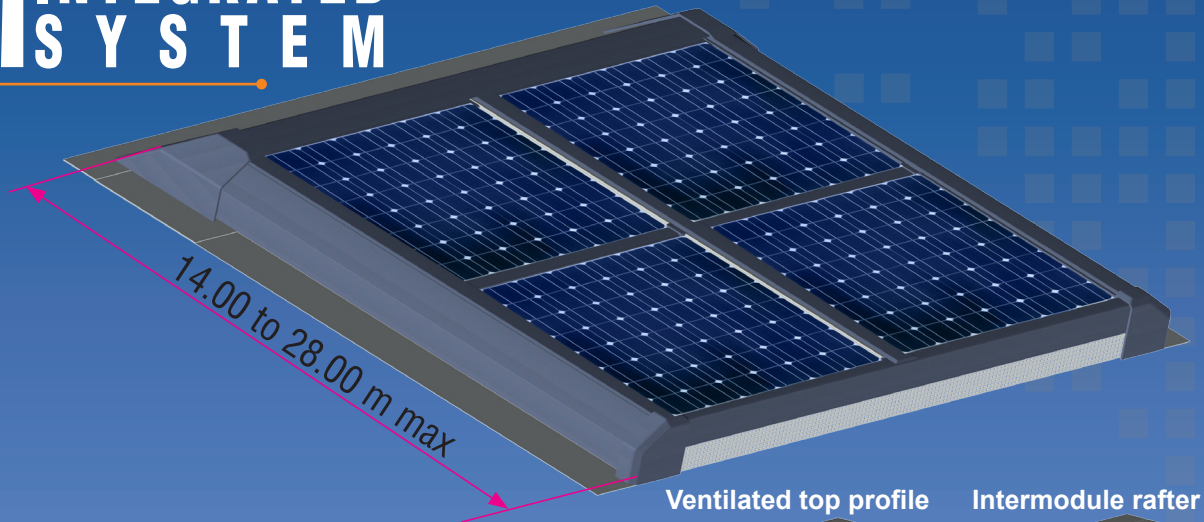


PATENTED SYSTEM
 SYSTÈME BREVETÉ
 SISTEMA PATENTADO
 N° P201030114

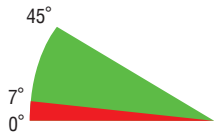


INDUSTRIAL OR AGRICULTURAL COMPLETE INTEGRATION WITH VERTICAL VENTILATION

115M INTEGRATED SYSTEM



+ ADVANTAGES

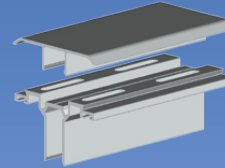


Tilt angle

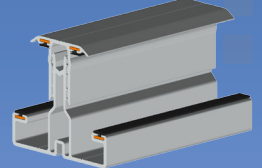
- Vertical ventilation system
- Cable duct
- Internal connection
- Up to 28 m high

For 35mm to 50mm thick panels

Ventilated top profile



Intermodule rafter



LANDSCAPE INSTALLATION
RECOMMENDED



FOR FRAMED PANELS

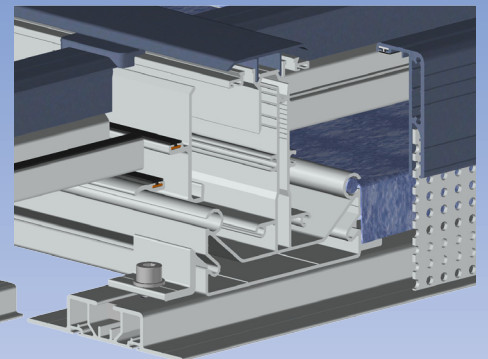
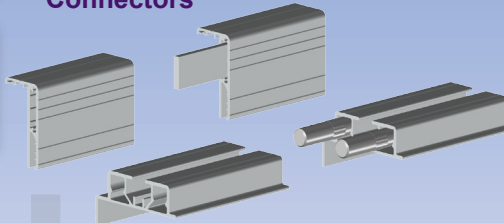
Structure components:

Aluminium profiles
Aluminium foundry pieces (AS13)
A2 stainless steel fastenings RAL 7016 +
EPDM washer and joint

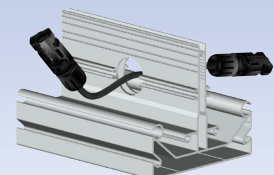
Finish:

- Mill finish
- Powder coated with PTFE
textured finish finish RAL 7016

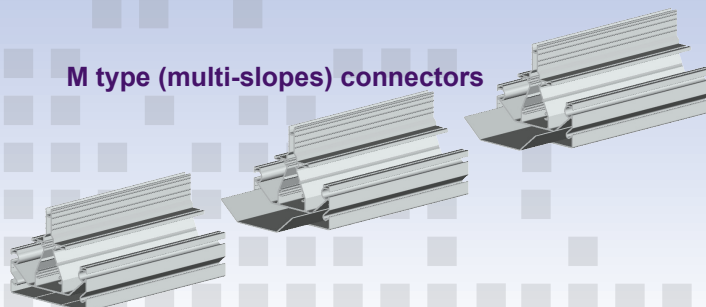
Connectors



Cable duct



M type (multi-slopes) connectors



MITJAVILA